




## our products

designed in denmark

AW	50	FR
AW	60	FR
AF	70	FR
AF	85	FR
AF	88	FR
AF	91	FR
AF	120	FR
A+	OUT	FR
A+	IN	FR

# Family owned corporation



Peter Birck  
Founder

Jan Nielsen  
COO

ALUFLAM is a family-owned business that was established in 1943 in Denmark with more than 25 years of experience in fire-rated glass and aluminium structures. We offer a wide selection of fire-rated constructions, from fire-rated classes EI30 to EI120 such as facades, windows, doors, sliding doors, skylights and glass roofs.

Our design range is extensive, from standard to more complex, specially designed systems. We are constantly developing new products, and now with our Extrusion line in Lithuania, we are able to make customized solutions.

# Cooperation with partners



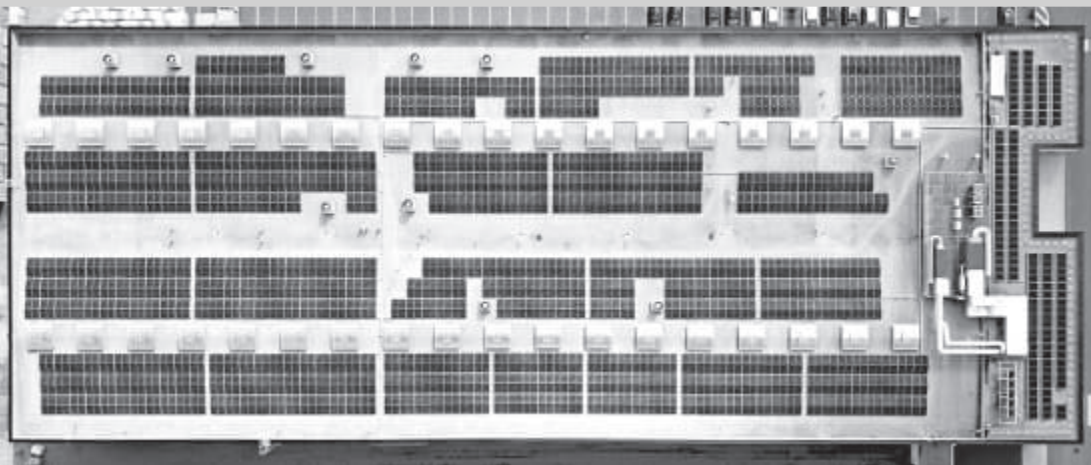
ALUFLAM works closely with architects, contractors and building developers throughout the entire process, from the planning phase to delivery, and installation of the finished product.

For many years ALUFLAM has played an active role in the development of solutions to fire technical challenges for hospitals, schools, care homes, museums and other public buildings, as well as hotels, office buildings and other similar locales.

# Production capacity

Solar panels installed power: 550 kW  
Annual power production up to 500.000 kWh

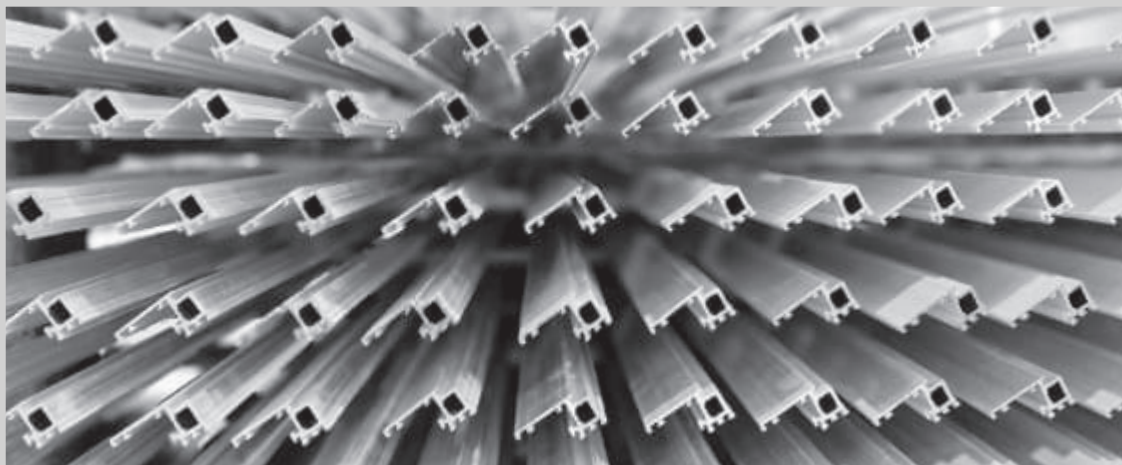
ALUFLAM Extrusion



ALUFLAM is a company that continually focuses on its development and investment. In 2022, a brand new factory (8,000 sq. meters), with its extrusion line for aluminium profiles, an innovative powder coating line and profile processing/machining equipment, was put into operation. The building has been designed using modern structural and energy supply solutions with priority given to environmentally friendly ideas.

Our extrusion line gives us the flexibility to meet the design challenges and requirements for particular projects with shortened delivery times. The building also houses offices for the technical department, all under one roof.

# Environmental care



ALUFLAM products are based on the new series of certified low-carbon aluminium from Hydro. This will minimize the carbon footprint of our products and maximise opportunities for our customers. The higher the recycled content is, the better it is for the environment. Hydro is operating the most advanced sorting technology in the industry, allowing them to provide one of the highest recycled content in the market.

The production process is fully traceable, and the product is certified by an independent third-party entity. That is real recycling, making Hydro a seal of approval for low-carbon aluminium.

# Facade AW50 FR



Copenhagen Opera House

## EI60 Fire Rated Facade

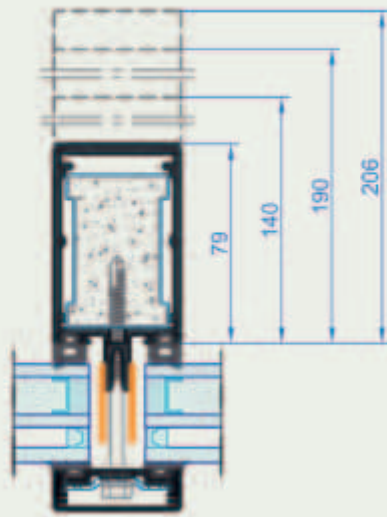
ALUFLAM AW50 glass constructions are made of narrow aluminum profiles, the space of which is filled with patented fire-resistant, retardant cooling cores.

Available in fire ratings E/EW/EI30, EI45 and EI60 with 30, 45 and 60 minutes of fire protection respectively. The products are fully tested in various European laboratories according to EN standards.



- Our facade complies with EN 12600 standards
- Fire classification EI60, tested with glass pane: 2200 x 3080 mm (max glass size)
- Single EI60 glass for inside use
- Insulated EI60 glass for outside use
- Thermal isolation with value down to  $U_m = 2.33 [W/m^2K]$
- Large panes can be configured with this system
- Aesthetic, narrow sightline of the system profiles: 50 mm
- Good sound resistance
- Single and multiple window panel design is available
- Surface finishing - powder coating (RAL, NCS), anodizing

Mullion



The photo shows the specimen after the 60-minute test was finished. View from the unexposed side.

Fire resistance	EW30 - EW90, EI30 - EI60
Tested glass	Fireblock 30-60, Contraflam 60
Maximal size	EW90: 2200 x 3080 mm / EI60: 1442 x 2902 mm
Minimal size	-
Frame depth / Sightline	78, 140, 190, 206 mm (mullion internal width) / 50 mm
Maximal glazing thickness	80 mm
Functionality	curtain walls

# Facade AW60 FR



Copenhagen Youth Dwellings

## EI120 Fire Rated Facade

AW60 glass constructions are made of narrow aluminum profiles, the space of which is filled with patented fire-resistant, retardant cooling cores. Available in fire ratings E/EW/EI60, and EI120 with 60 and 120 minutes of fire protection respectively.

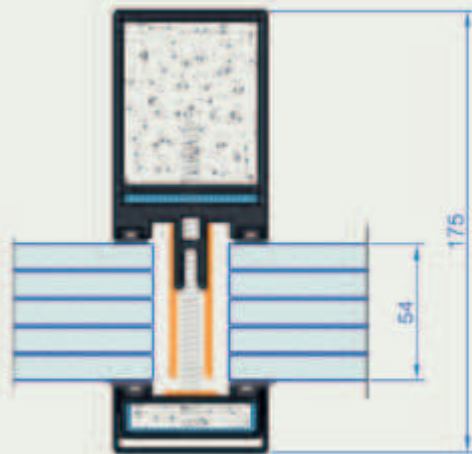
The products are fully tested in various European laboratories according to EN standards.





- Our AW60 facade system complies with EN 12600 standards
- Fire classification E/EW/EI60 and 120
- The barrier to thermal radiation
- Large panes can be configured with this system
- Aesthetic, narrow sightline of the system profiles: 60 mm
- Good sound resistance
- Single and multiple window panel design is available
- Surface finishing in RAL, NCS pallets or anodized

Mullion



The picture presents the specient view after the 120 minutes test where performed. The photo was taken on the unexposed side.

Fire resistance	EW120, EI60 - EI90 - EI120
Tested glass	Contraflam 60-90-120, Pyrostop 60-120, Pyrobel 54
Maximal size	3000 x 3000 mm
Minimal size	600 x 600 mm
Frame depth / Sightline	90 mm (mullion internal width) / 60mm
Maximal glazing thickness	85 mm
Functionality	curtain walls

# Double Door AF70 FR



## Fire Rated Door

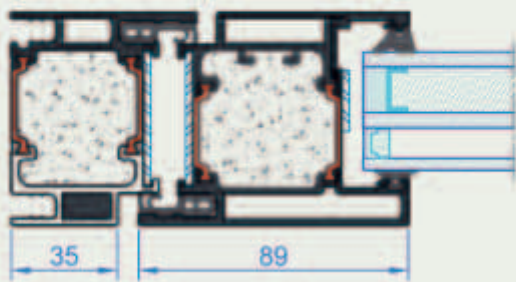
Aluflam AF70 glass fire doors are high performance, thermally broken narrow aluminium frames with its cavity filled with patented fire retardant cooling core.

Incorporating extensively tested fire resistant glazing, the AF70 door system can be used internally up 60 minute fire ratings.

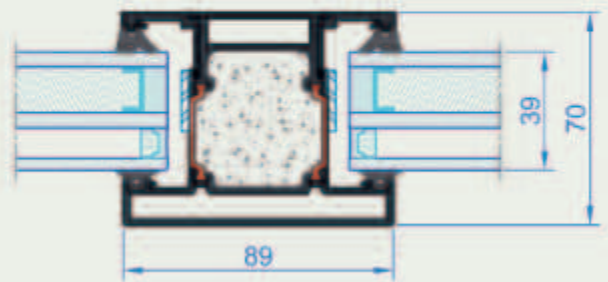


- Clean, sharp lines of narrow stile aluminium
- Large glass areas
- Easily integrated into large shopfront, glass partition or curtain wall
- Can be installed with ease in masonry or plasterboard fire wall
- High impact resistance
- Energy efficient
- Incorporates high quality commercial door hardware for both, interior and exterior installation
- Sound reduction - up to 39 dB

Frame / Door



Transom



Fire resistance	EI30 - EI60
Tested glass	Contraflam 60, Fireblock 30-60
Maximal size	1200 x 2050 mm (per glass field)
Minimal size	700 x 700 mm
Frame depth / Sightline	70 mm / 89 mm
Maximal glazing thickness	38 mm
Functionality	single, double doors, partitions

# System AF85 FR



## Fire Rated Doors & Windows

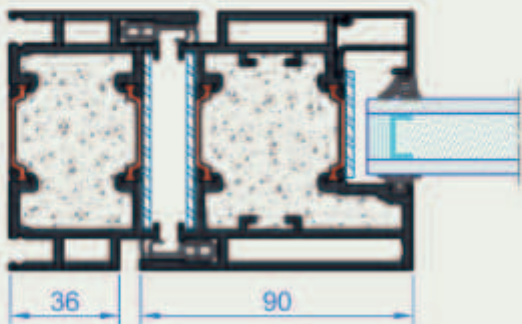
Our fire windows comply with EN 12600 safety glass standards and have excellent clarity and noise reduction. The glasses can be assembled with profile or can be assembled in a butt-joint system solution for glazed walls.

Available in fire class E/EW/EI 30, 45, and 60 with 30, 45, and 60 minutes fire protection, respectively. Products are fully tested in a number of European laboratories and EN standards.

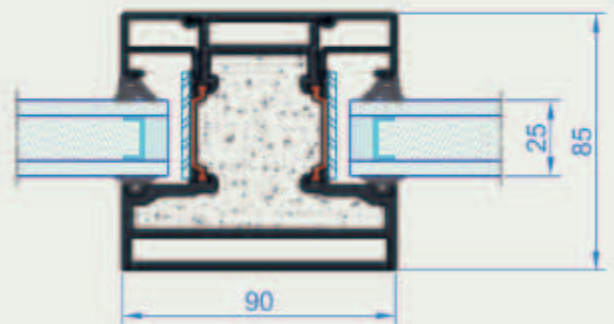


- ALUFLAM AF85 sliding system can be produced with integrated glass doors or flush doors up to EI60
- Single or double sliding system
- Large glass areas
- Narrow profiles
- Sound reduction - up to 45 dB
- Ready for glass-to-glass joints (Butt-Joint)
- Available in single and multiple window panel design
- Simple assembly
- Can be manual, semi-automatic, or automatic

Door



Mullion



Fire resistance	EI60
Tested glass	Contraflam 60
Maximal size	1201 x 2050 mm (per glass field)
Minimal size	700 x 700mm
Frame depth / Sightline	85 mm / 90 mm
Maximal glazing thickness	39 mm
Functionality	single, double doors, sliding doors, partitions

# Double Door AF88 FR



## Fire Rated Door

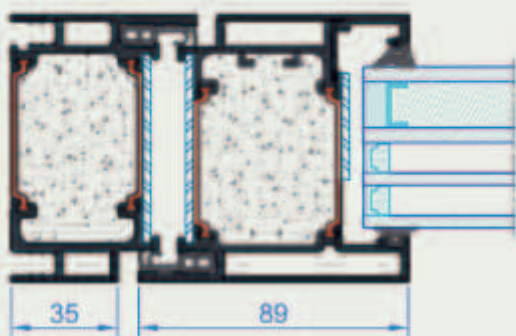
Aluflam AF88 glass fire doors are high performance, thermally broken narrow aluminium frames with its cavity filled with patented fire retardant cooling core.

Incorporating extensively tested fire resistant glazing, the AF88 single door system can be used internally up to 60 minute fire ratings.

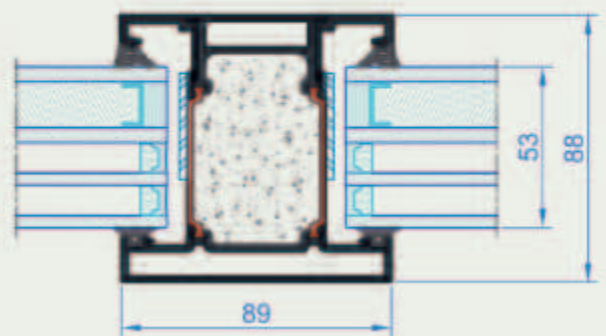


- Inward and outward opening version
- Single, double door versions and partitions
- For internal and external usage
- System depth 88 mm
- Concealed, surface and roller type of hinges
- Opening - inward, outward
- Operating - manual, semi-automatic, automatic
- Sound reduction - up to 45 dB
- Surface finishing - powder coating (RAL, NCS), anodizing

Frame / Door



Transom



Fire resistance	EI60
Tested glass	Contraflam 60, Fireblock 60
Maximal size	2300 x 2300 mm
Minimal size	700 x 700mm
Frame depth / Sightline	88 mm / 89 mm
Maximal glazing thickness	56 mm
Functionality	single, double doors, partitions

# System AF91 FR



Codan Hus in Copenhagen

## Fire Rated Doors & Windows

Our fire windows comply with EN 12600 safety glass standards and have excellent clarity and noise reduction. The glasses can be assembled with profile or can be assembled in a butt-joint system for a glazed wall solution.

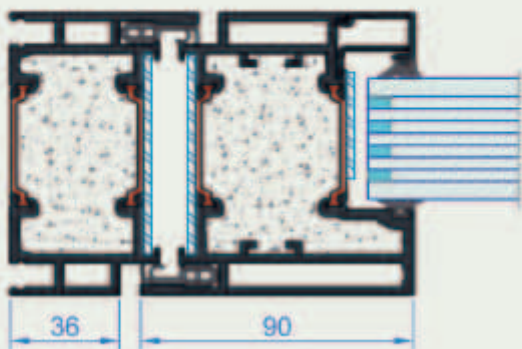
Available in fire class EW/EI 90 and E/EW120 with 90 and 120 minutes fire protection, respectively. Products are fully tested in various European laboratories and EN standards.



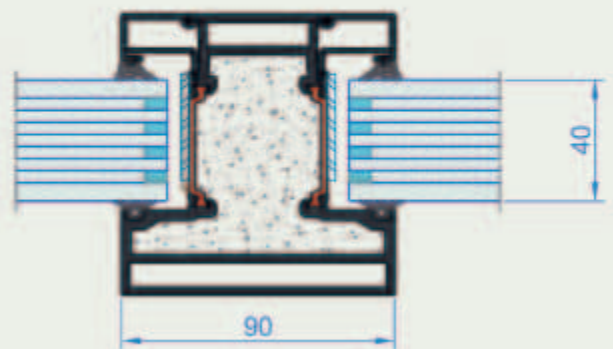


- System AF91 can be done with integrated glass doors and flush doors up to EI60
- Large glass areas
- Narrow profiles
- Sound reduction - up to 45 dB
- Ready for glass-to-glass joints (Butt-Joint)
- Available in single and multiple window panel design
- Simple assembly
- Surface finishing - powder coating (RAL, NCS), anodizing

Door



Mullion



Fire resistance	EI60 - EI90 - EW120
Tested glass	Contraflam 60-90, Pyrostop 60-90
Maximal size	965(971) x 2100(2002) mm, per glass field
Minimal size	700 x 700mm
Frame depth / Sightline	93 mm / 90 mm
Maximal glazing thickness	46 mm
Functionality	single, double doors, partitions

# AF120



Sport Arena in Next House, Copenhagen

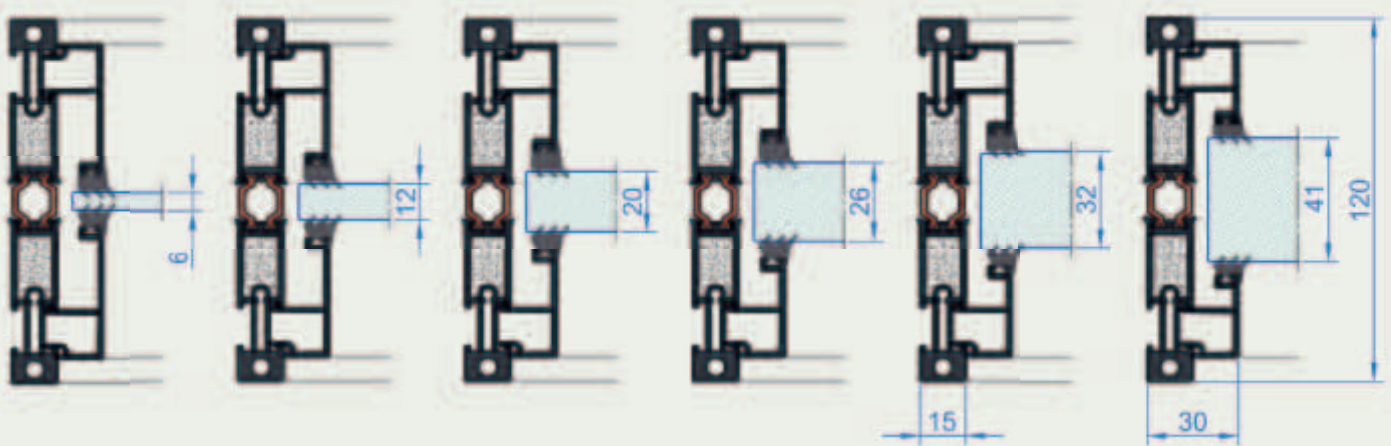
## Internal walls system

ALUFLAM AF120 system allows building structures constructed of narrow aluminium profiles filled with patented fire-redant cooling core. The product is available in 30, 45 and 60 minutes protection in EI fire class. Our fire windows comply with EN 12600 safety glass standards and have excellent clarity and noise reduction. System AF120 allows the design of structures with integrated glass doors or flush doors up to EI30.



- **Fire resistance** – EI60 class
- **Visual effect** – narrow window frame with 30 mm sightline
- **Universal installation** – the possibility of installation as a single door in the wall construction and as an element of the facade system
- **Noise reduction** up to 40dB
- **Numerous profiles family** – wide palette of glazing beads allows using any glass unit in the range 6-41mm with 1mm increment
- **Surface finishing** - powder coating (RAL, NCS), anodizing

The system is adapted to the full range of glass package thicknesses in the range of 6-41 mm



Fire resistance	EI60 (internal & external side)
Tested glass	Fireblock 60
Maximal size	3205 x 3055 mm
Minimal size	300 x 300mm
Frame depth / Sightline	120 mm / 30 mm
Maximal glazing thickness	59 mm
Functionality	partitions

# A+ Outward FR Window



Carlsberg Byen in Copenhagen

## Outward Opening Fire-Rated Window

ALUFLAM is proud to present a new window system with an exceptionally low profile that opens outwards.

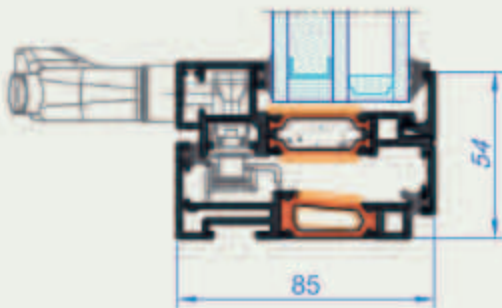
The profile height of 54 mm ensures not only lightness and aesthetics but also full coherence with all other products of the A+ family. This system complies with the EI60 classification for both sides, internal and external.



## Outward opening fire-rated window from the A+ family

- **Fire resistance** – EI60 / EW60 / E60 for the used glass:  
VETROTECH CF60 / air / Planilux ( 27 / 12 / 6 mm )
- **Visual effect** – narrow window frame with 54 mm sightline ensures full visual and system compatibility with all other A+ family products
- **Universal installation** – the possibility of installation as a single window in the wall construction and as an element of the facade system
- **Various opening options** – a manual opening option with a handle or automatic opening using special actuators, top hung opening angle: 50 degrees
- **Numerous colours and finishes** – aluminium profiles can be powder coated (RAL, NCS) or anodised

Manual handle version



Automatic actuators version (example with facade AW50)



Fire resistance	EW60, EI60 (internal & external side)
Tested glass	Contraflam 60 / air / Planilux ( 27 / 12 / 6 mm )
Maximal size	1244 x 1104 mm
Minimal size	700 x 700 mm
Frame depth / Sightline	85 mm / 54 mm
Maximal glazing thickness	45 mm
Functionality	window, awning window

# A+ Inward FR Window



## Inward Opening Fire-Rated Window

ALUFLAM is proud to present a new window system with an exceptionally low profile that opens inwards.

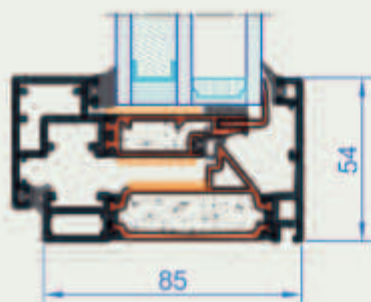
The profile height of 54 mm ensures not only lightness and aesthetics but also full coherence with all other products of the A+ family. This system complies with the EI60 classification for both sides, internal and external.



## Inward opening fire-rated window from the A+ family

- **Visual effect** – narrow window frame with 54 mm sightline ensures full visual and system compatibility with all other A+ family products
- **Universal installation** – the possibility of installation as a single window in the wall construction and as an element of the facade system
- **Numerous frame depths** – wide palette of frame profiles with different depths and types of sightline: flat and bevel
- **Opening** - inward, tilt & turn
- **Operating** - manual, automatic
- **Sound reduction** - up to 42 dB
- **Surface finishing** - powder coating (RAL, NCS), anodizing

Window



Facade window (example with facade AW50)



Fire resistance	EW60, EI60 (internal & external side)
Tested glass	5mm ESG / 25mm Fireblock 60
Maximal size	1244 x 1104 mm
Minimal size	700 x 700 mm
Frame depth / Sightline	85, 95, 149, 159, 174 mm / 54mm
Maximal glazing thickness	48 mm
Functionality	windows



**ALUFLAM A/S  
HEADQUARTER**

**ALUFLAM A/S**

**ALUFLAM FACADER A/S**

Langebjergvaenget 13-15  
 Langebjergvaenget 13-15  
 DK-4000 Roskilde DENMARK  
 Langebjergvaenget 13-15  
 DK-4000 Roskilde DENMARK  
 Langebjergvaenget 13-15  
 DK-4000 Roskilde DENMARK

P: (+45) 46 75 06 11 P: (+45) 46 75 06 11 P: (+45) 22 68 98 04  
 M: info@alufam.com M: info@alufam.com M: info@alufam.dk  
 W: www.alufam.com W: www.alufam.com W: www.alufam.com

**ALUFLAM  
EXTRUSION**

Ukmergės g.17  
 Road  
 LT-55101  
 Ukmergės g.17, Jonava  
 LT-55101  
 LITHUANIA

P: (+370) (0) 8 213 12 121  
 M: info@alufam.lt  
 W: www.alufam.lt

**ALUFLAM  
NORTH AMERICA**

16604 Edwards Road  
 Cerritos  
 CA 90703  
 USA  
 16604 Edwards Road,  
 Cerritos, CA 90703  
 USA

P: (+1) 562 926 9520  
 M: info@alufam-usa.com  
 W: www.alufam-usa.com

**ALUFLAM  
UNITED KINGDOM**

Unit 21,  
 Business Innovation Centre  
 Binley Business Park  
 Coventry CV3 2TX  
 UK

**Martin Grove**  
**Operations Director (UK)**  
 P: (+44) (0) 7563 834746  
 M: martin.grove@alufam.co.uk  
 W: www.alufam.co.uk

**ALUFLAM  
AUSTRALIA**

467 Hammond Rd  
 Dandenong South  
 VIC 3175  
 AUSTRALIA  
 467 Hammond Rd  
 Dandenong South, VIC 3175  
 AUSTRALIA

P: (+61) (0) 3 8526 1999  
 M: info@alufam.com.au  
 W: www.alufam.com.au

**ALUFLAM  
EGYPT CAIRO**

Merna Nashaat  
 Representative Engineer

Merna Nashaat  
 Representative Engineer

P: (+20) (0) 03 322 2163  
 M: mna@alufam.com