



Installation manual

AF91 Double leaf doors

Aluflam A/S • Langebjergvænget 13 • DK 4000 Roskilde
Tel. +45 4675 0611 • Fax +45 4675 0811 • info@aluflam.dk •
<http://www.aluflam.dk>

1. Tools for the installation:

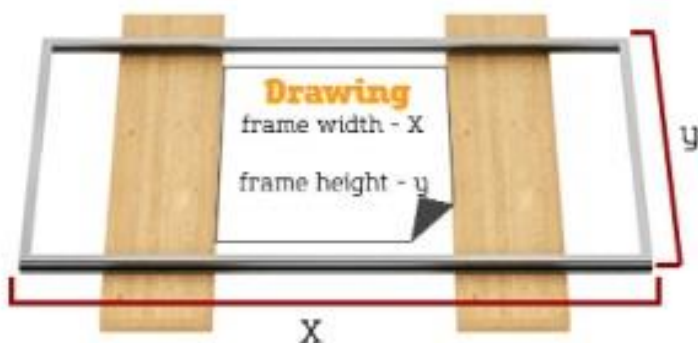
- 13 mm socket with open wrench
- Power hammer drill with 6,5 mm drill bits
- Heavy duty glass handling tools
- Gasket roller
- Knife
- Tape measure
- Level
- Rubber Mallet

2. Materials for the installation:

- Insulating material such as mineral wool, caulking, etc.
- 7,5' x H mm concrete screws
- 4,2 x 32 tapping screws
- Silicone

3. Unpacking

All of the ALUFLAM's aluminum constructions are shipped in thermally treated wooden boxes. Prepare a dry, clean place for placing the box prior to opening it. Aluminum constructions cannot be placed on concrete, tile or other abrasive surfaces. A wooden plank or piece of packing carton can be used for construction placement.



3. UNPACKING

Carefully remove the packaging. The frames are now unprotected and should be handled carefully. Place them on a set of wooden planks, to keep them elevated from the floor (pic. 3.1). Remove the door from the frame and place in a safe and secure location, elevated from the floor and free from potential harm. Make sure the door is lying flat, to prevent it from falling over and getting damaged (pic 3.2).



Pic. 3.1

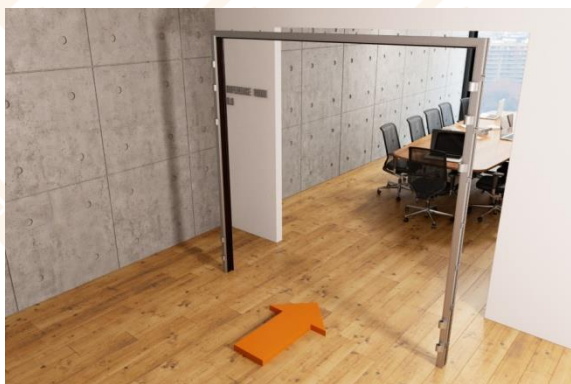


Pic. 3.2

4. CONSTRUCTION

4.1 Installation of frame

Detach wood/ metal transportation strip connected to lower end of frame. Install the frame plumb, square, level and true. Gradually and evenly back out all adjustment screws with 13mm open wrench (see detail). Be careful to not cause frame distortion due to excessive adjustment. Measure the size of the frame and ensure that it meets the dimensions referenced on the shop drawing. Temporarily fasten the door frame using clamps (pic. 4.3).



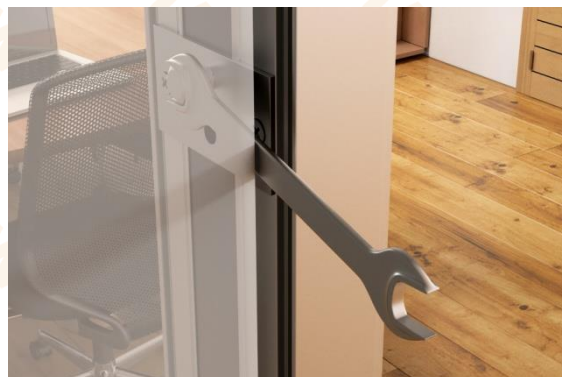
Pic. 4.1



Pic. 4.2



Pic. 4.3



Pic. 4.4

4.2 Positioning and anchoring of the construction

Drill anchor locations into surrounding structure using the factory pre-drilled frame holes as guides 6.5mm drill. Anchor the frame to the wall opening at all pre-drilled anchor locations.



Pic. 4.5

Install door leaf by aligning the hinges and lowering the leaf into position. Assure that the door leaf swings freely and that it opens and closes without interference. Carefully operate door leaf to assure that it opens and closes freely. If necessary, adjust door clearances by adjusting blocking of glass units and/ or adjusting the hinges (see separate hinge instructions).



Pic. 4.6



Pic. 4.7

4.3 Construction glazing

To install the glass, glazing bridges (glass support) have to be installed in first place. This is done by sliding the bridges in the special groove in the transom profiles. Glass support s are installed only in the bottom transom profile, on both ends of the profile.

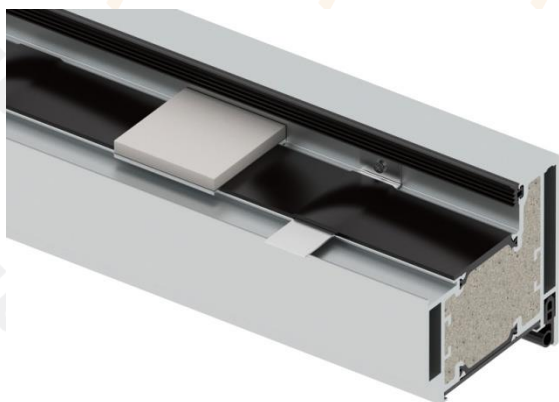


Pic. 4.8



Pic. 4.9

On top of the glazing bridges, Promatect H or L glazing bricks are installed, to support the glass weight on top of the glazing bridges.



Pic. 5.0



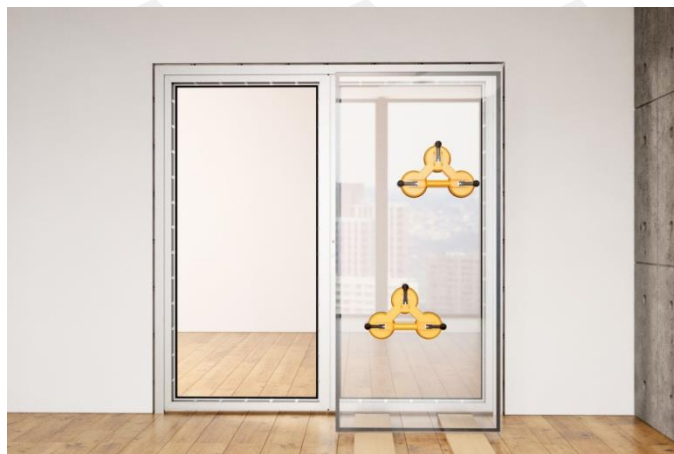
Pic. 5.1

4.3 Construction glazing

Normally ALUFLAM glass comes packed in wooden boxes, before opening and unloading the boxes, prepare a wooden or paper support for unloading the glasses on the ground.

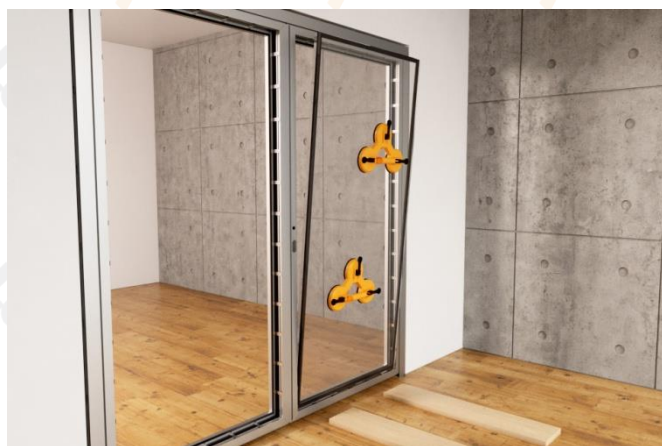


Pic. 5.2

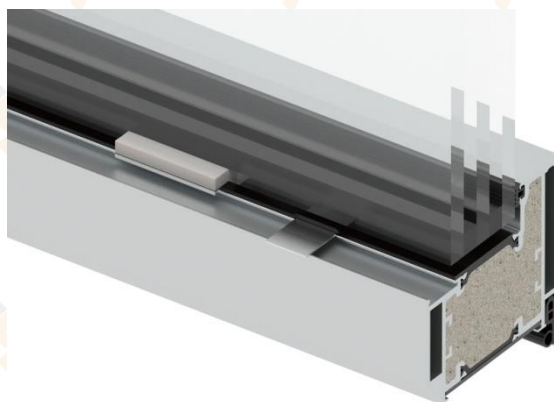


Pic. 5.3

On top of the glass supporting bricks, glass can be loaded as shown in (pic. 5.4) It is better to start the installation from the bottom part of the construction. Place the glass inside the door. Make sure to do so at angle, to ease placement.



Pic. 5.4



Pic. 5.5

4.3 Construction glazing

Fasten the glass into the frame by bending the glazing clips. Use a rubber mallet and a non-metal wedge to secure the glass in place. Make sure not to damage the glass during this procedure.



Pic. 5.6



Pic. 5.7



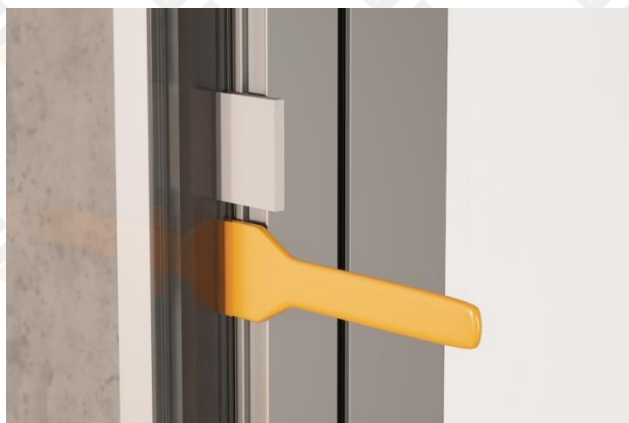
Pic. 5.8



Pic. 5.9

4.3 Construction glazing

Locate glazing bead installation point, and install glazing bead. Spray with mild, soapy water to ease installation of glazing gasket.



Pic.6.0

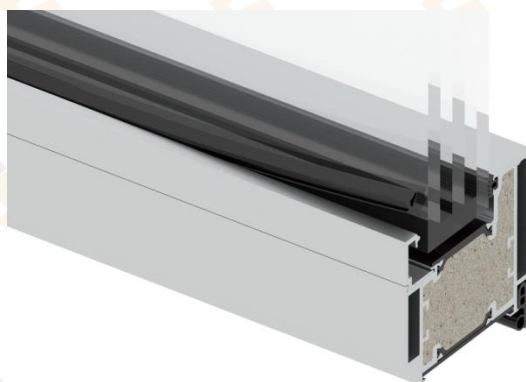


Pic. 6.1

Apply pressure to the glazing gasket and install it in the glazing bead. Wipe the profile with a dry piece of cloth.



Pic. 6.2



Pic. 6.3

4.3 Construction glazing

Cut the gasket in a 45 degree angle at the corners. Use a gasket roller to ensure proper fit.



Pic.6.4



Pic. 6.5



Pic. 6.6

4.4 Installation of accessories

Install mounting plate in designated hole, and mount the handle on the door. Tighten the handle to prevent it from falling apart.



Pic.6.7



Pic. 6.8

Snap the cover in place. The door handle is now installed.



Pic. 6.9



Pic. 7.0

4.4 Installation of accessories

Carefully operate door leaf to assure that it opens and closes freely. If necessary, adjust door clearances by adjusting blocking of glass units and/or adjusting the hinges (see separate hinge instructions).



Pic.7.1



Pic. 7.2



Pic. 7.3



Pic. 7.4

Attach door closers and other remaining hardware per shop drawing and hardware installation instructions.



Pic.7.5

When the above steps are finished, the finishing works can be done. This, for a fireproof construction includes mineral wool installation in the GAP between frame and wall. Preferably, silicone caulking can be done. This ensures long-life tightness of the construction and its surroundings.



Pic. 7.6



Pic. 7.7



Pic. 7.8



Pic. 7.9

For more information on a specific issue, query or any other technical issue, please use ALUFLAM's dedicated database, which can be found on the below link:

ALUFLAM®LAB