



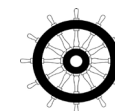
DEKO OCEAN GD A60 AUTOMATIC SINGLE SLIDING Installation instructions



DEKO OCEAN GD A60 AUTOMATIC SINGLE SLIDING

Contents

Basic information	Page 3
Safety	Page 4
Unpacking	Page 5
Installation of door frame	Page 6-8
Installation of railing system	Page 9-10
Preparation for glazing	Page 11
Glazing and adjustments	Pages 12-14
Door handle and rose installation	Page 15
Electrical connections	Pages 16-17
List of required tools	Page 18



DEKO OCEAN GD A60 AUTOMATIC SINGLE SLIDING

Single sliding door in A-class bulkheads

The door system is 74 mm wide and can be connected to steel bulkhead without additional extra frame. The door has been assembled, inspected and tested after FTP Code & Module D certification system.

The glass is always supplied together with the door, but in separate box to ensure safe transportation and product quality.

Regarding the storage of the glass - please make sure that is stored in a dry place and between -10/+45 Celsius degrees.

Upon receiving please check the dimensions of the doors and all ship loose items in the package.

If any damage or quantity loss, please contact the main office in Denmark.

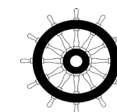
Door to bulkhead system fasteners are supplied by DEKO Ocean, since they are part of the type approval.

Installation materials like sealants, rivets, reinforcement are not part of the standard delivery, unless other specified in the project. For any special - custom made - profile, bolt, frame, please contact our main office.

This installation manual is valid for A60-Class Single Sliding Door with automatic mechanism for interior use.



Door in A60 standard Steel Bulkhead



DEKO OCEAN GD A60 AUTOMATIC SINGLE SLIDING

Safety

Thoroughly familiarize yourself with all parts of the door system as well as the installation process and steps.

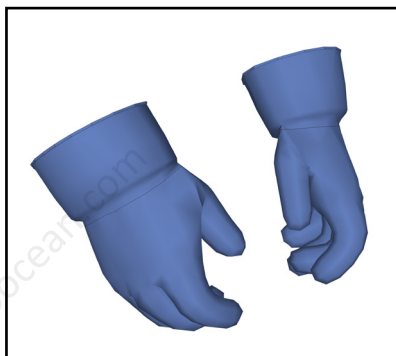
Do not work alone. Two or more people are required.

Be careful when handling glass. Clear the area around the opening where the door will be installed to avoid contact with anything that might break the glass panels.

Use safe lifting techniques.

Use caution when working at elevated heights.

Gloves Required



Eye protection Required



Helmet Required



Safety shoes Required



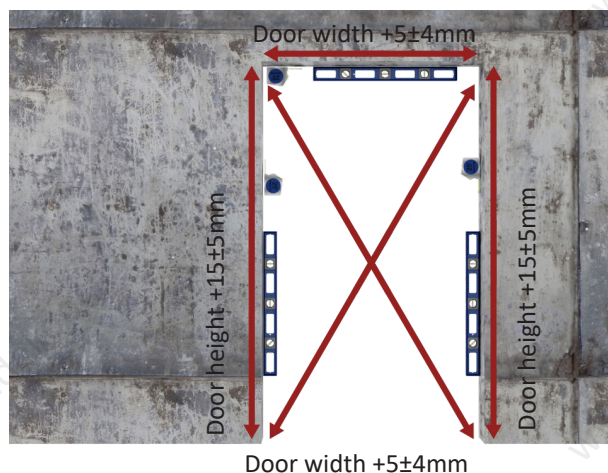
DEKO OCEAN GD A60 AUTOMATIC SINGLE SLIDING

Unpacking

- Before installation check bulkhead opening for the door frame. The opening must be square, level and plumb as on approved shop drawings - to ensure easy installation process. Between the opening and frame must be min.10 but max.20 mm space for adjustment on each side.
- Always take into account the vessels relative level points.
- Specify and MARK points on top of the opening and floor for the correct placement of the door from the both sides of the bulkhead.
- Check the size of the door, and make sure it is according to the shop drawing.
- Carefully lift out the frame from the package and place the door on a soft surface or on soft wooden boards.
- The frame is made of aluminium - please handle it with extreme care. Make sure the door leaves are not fixed to the frame by tape before lifting.
- Remove all loose components (glazing beads, seals, etc.)
- If door handle is already installed – remove door handle rose cover, door handle and rose, by unscrewing the screws.

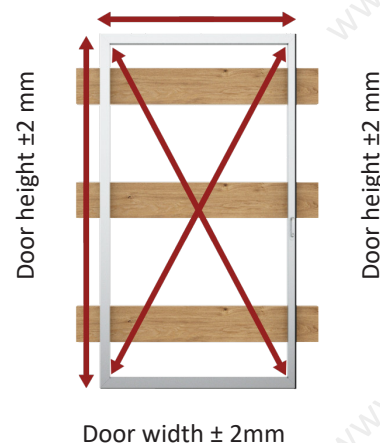
Check frame opening

Doors to be mounted in steel bulkhead

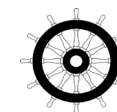
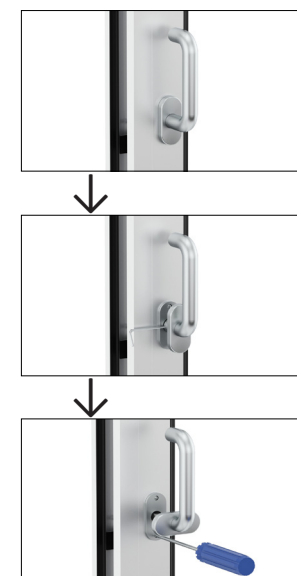


Check the door

Door width ± 2 mm



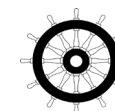
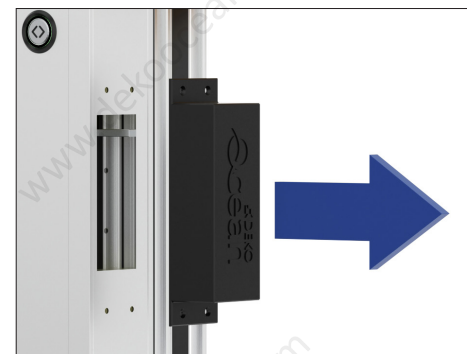
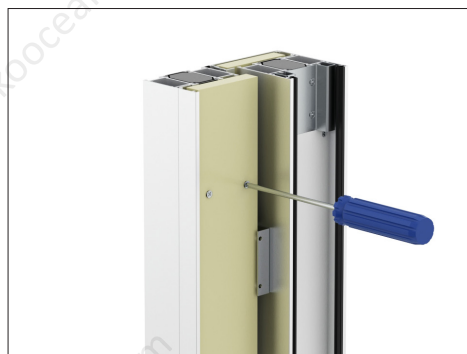
Door handle removing



DEKO OCEAN GD A60 AUTOMATIC SINGLE SLIDING

Installation of door frame – Preparations

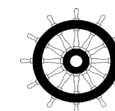
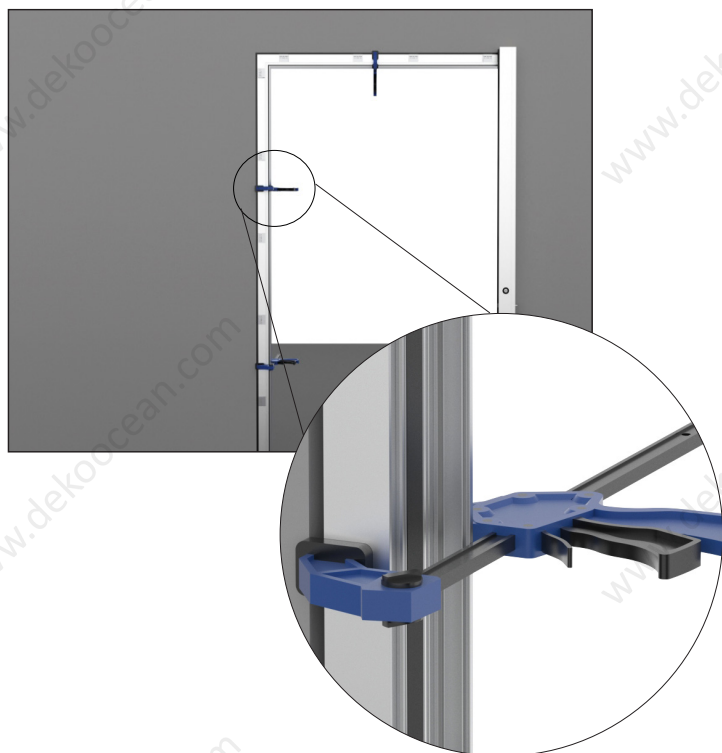
- Before installation of frame, remove aluminium cover profiles from the main frame, these profiles are mounted with pop-rivets or metric countersunk screws.
- Unscrew all screws below to be able to remove the fire insulation.
- After removing fire insulation all holes for fastening bolts will be visible and now the frame will be ready to mount.
- For automatics where locks are equipped with electromagnetic opening device, the cover box must be removed by unscrewing 4 metric bolts from the 4 corners. See last picture.



DEKO OCEAN GD A60 AUTOMATIC SINGLE SLIDING

Installation of door frame

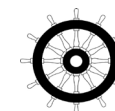
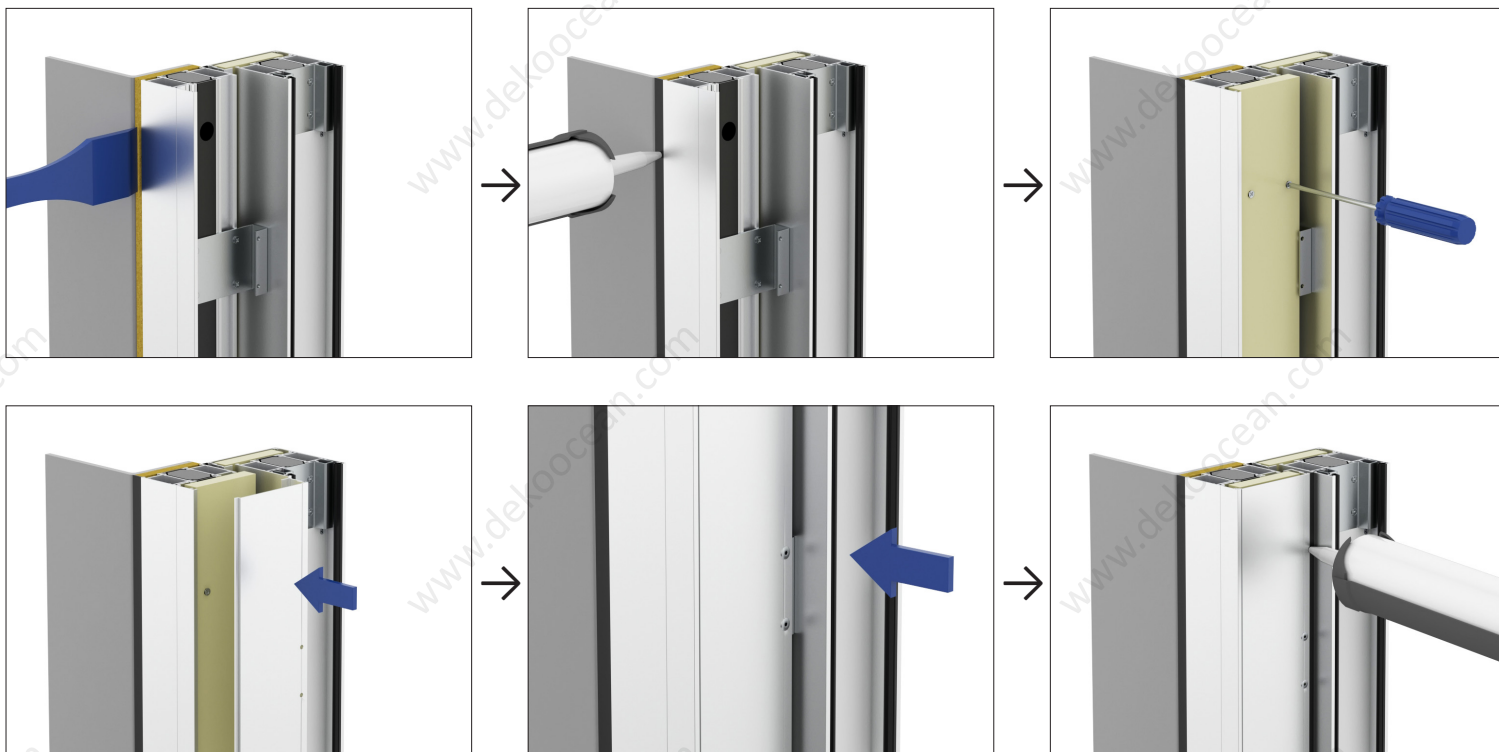
- Install the frame into the bulkhead with c-clamps without screwing.
- There should be 15 ± 5 mm gap between the opening and the door frame on all sides.
- To adjust the distances between steel bulkhead and door frame, gradually back out all adjustment screws with an open wrench or with a hex key from inside of the adjustment bolt. Do not use excessive power, this may cause frame distortion.
- Check upper clear opening inside the frame and same on the lower side at the bottom. They must be identical.
- Drill bolt/anchor locations into the steel bulkhead using the factory pre-drilled holes as guides. Use the supplied anchors, bolts to fasten the door frame to the bulkhead.



DEKO OCEAN GD A60 AUTOMATIC SINGLE SLIDING

Finishing installation of frame

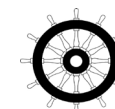
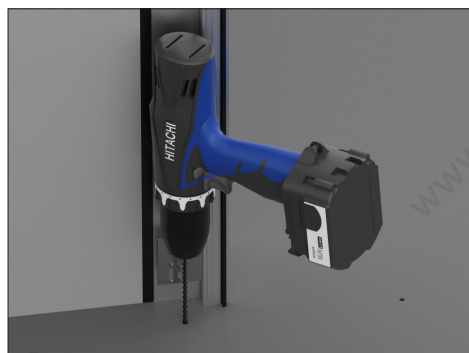
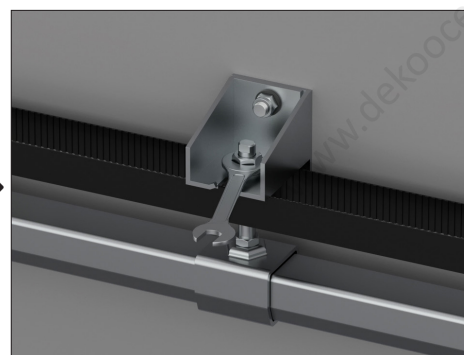
- Insulate the space between the door and bulkhead with mineral wool insulation.
- Cover the insulation with marine type silicone to ensure a nice finish.
- Place back the frame fire insulation – fasten it with the same screws back to its original position.
- Mount the cover profile and use pop-rivets or stainless-steel screws for fixation.
- Cover the remaining space between cover profile and door frame with silicone for a nice finish.



DEKO OCEAN GD A60 AUTOMATIC SINGLE SLIDING

Installation of railing system and floor guide

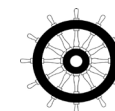
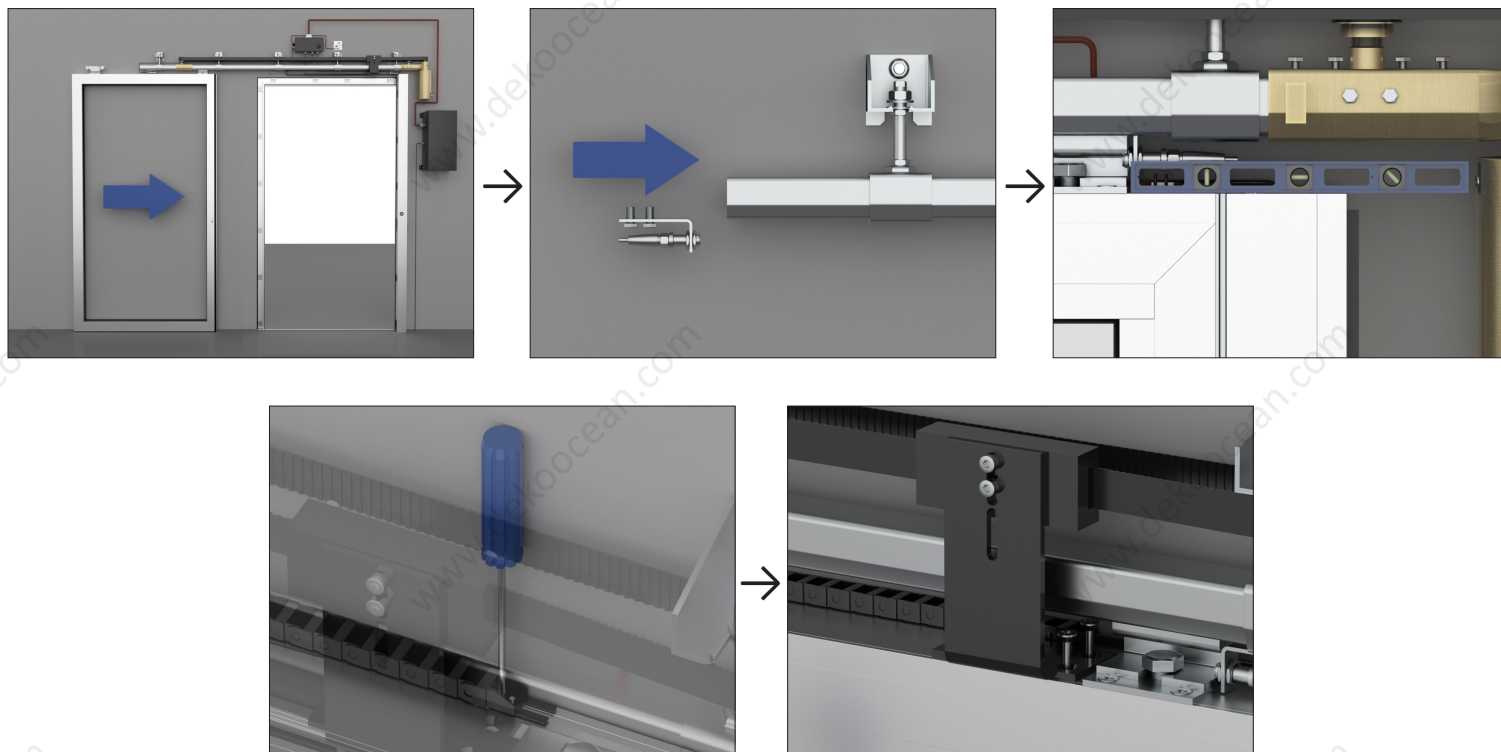
- To install the railing check shop drawings. Height of railing is specified on the drawings. Always measure the height of the railing from the top of the door frame already installed. The brackets have to be placed with a distance of 500-600mm if possible to ensure easy rolling. Use the manual and shop drawing from the automatic drive to ensure the brackets are not in a position where a motor or other sensors have to be mounted.
- The brackets have to be mounted by welding or with bolts of minimum M12 size.
- The best way to install the railing is to slide all rail height adjusters on the rail and push into the brackets with wide open adjustment – loose bolts...
- Move the bolts so, that the track is in its highest position towards the bracket as possible. Do not tighten the bolts yet – just after door leaf is up in the track and in closed position.
- Important : Install the floor guide after the shop drawing specifications. Use screws or bolts suitable for your floor type.



DEKO OCEAN GD A60 AUTOMATIC SINGLE SLIDING

Installation of railing system and floor guide

- To continue installation, mount all control boxes and sensors from the automatic drive. To make sure you place them to correct position please follow the manual from the automatic drive.
- Lift the door leaf up to vertical position and push the wheels on top of the door leaf into the track. The track has to be in its highest position to be able to push the door above the floor guide.
- To ensure the door can't roll out from the track, mount the door stop and fasten the bolts.
- Adjust the height of the door leaf to be at the same level as the door frame with the help of the railing brackets and bolts.
- Remove glazing beads from the door leaf if you have not done it already.

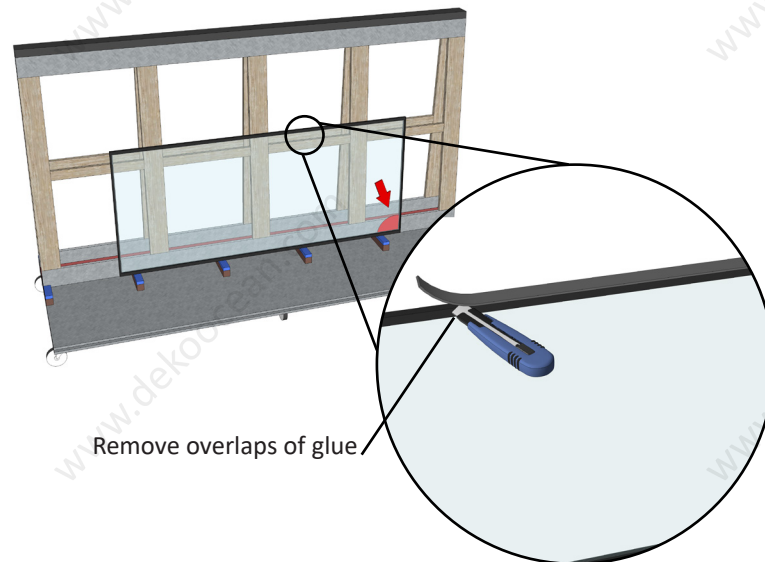
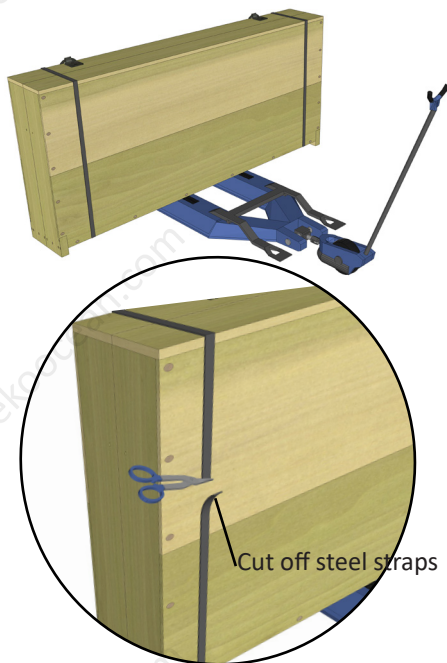


DEKO OCEAN GD A60 AUTOMATIC SINGLE SLIDING

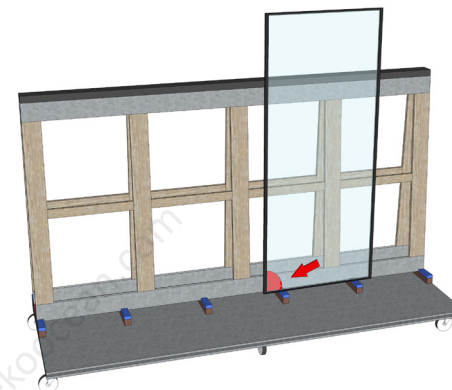
Preparation for glazing

- Place the box on top of one L-rack - tilted type - for glass.
- Cut off the steel straps, and open the box first from the top, afterwards remove the front side cover and at last the side covers.
- For easy insertion, remove overlaps of glue from the side of the glass, or glass edges if they are bigger than 3-5mm. Always install the glass with the marked corner down.
- **Do not lay down the glass - this may cause bubbles inside the fire gel.**
- **! Before you start mounting glass in the doors, make sure, that glazed bulkhead profiles are already mounted.**
- **Never put the glass on a hard surface** (for example, use wooden pads). Clean glass surface, place glass suction cups on it, which can carry the weight of the glass.
- If you have not removed the glazing bead and gaskets, please remove them now. Insert the Promatect glazing bricks on the frame.

Place glass box on L-rack



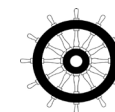
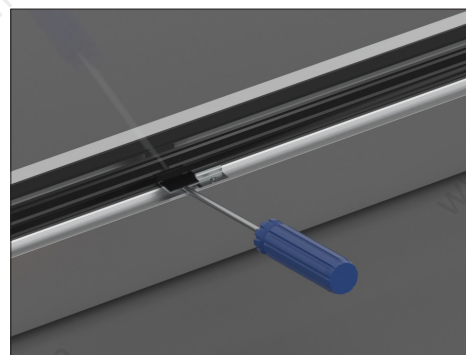
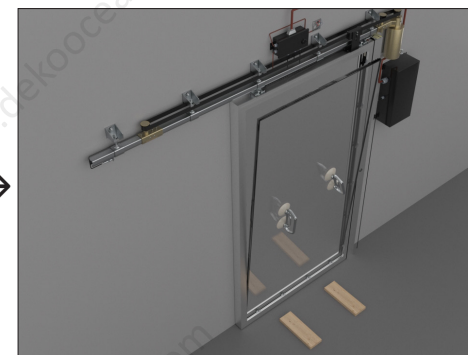
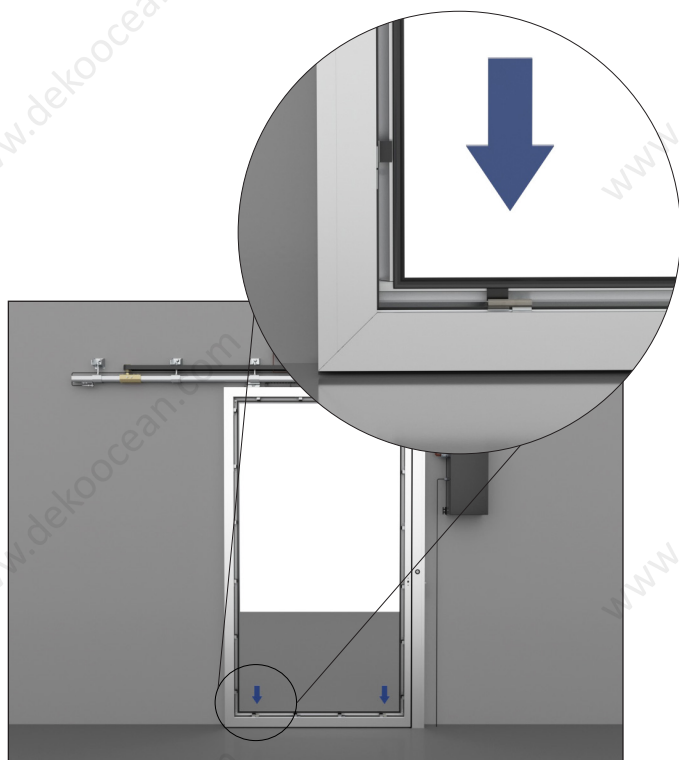
Rotate the glass using the center red points



DEKO OCEAN GD A60 AUTOMATIC SINGLE SLIDING

Glazing

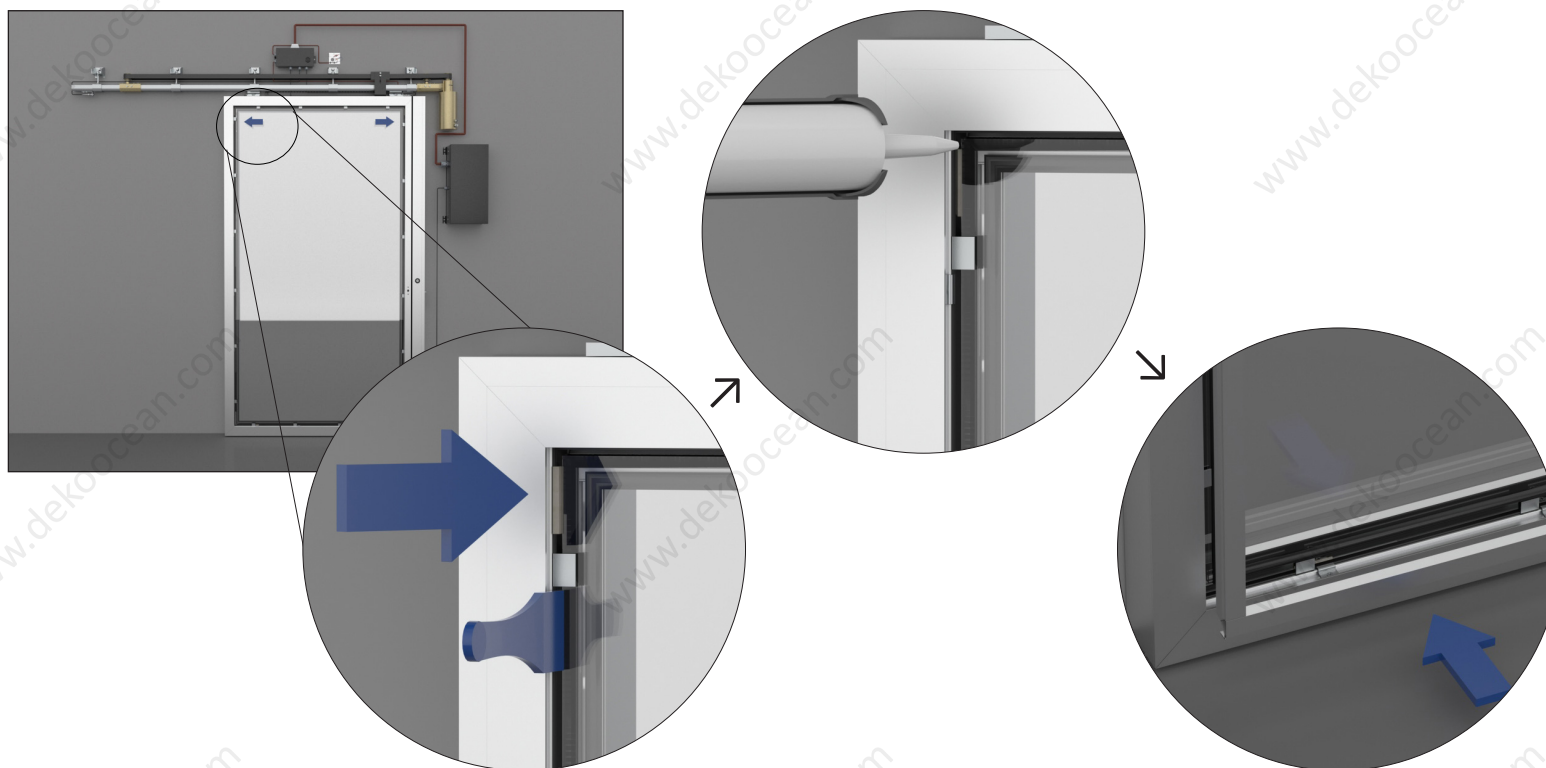
- Remove glazing beads as first and prepare for glazing. Use wooden or gumi pads to support the glass.
- When installing, use wooden pads to support the glass.
- Do not make quick movements, since the glass is very fragile. Be always sure before moving the glass, that the suction cups are properly fastened to the glass surface. Make a test, if necessary.
- Install the glass on top of the Promatect glazing bricks and carefully push the top into the position.
- Secure the glass with two glazing clips on top and side using a rubber mallet, or with use of non-metal wedge. Do not press the glass!
- Bend all glazing clips towards the glass with extreme care using non-metal wedges.



DEKO OCEAN GD A60 AUTOMATIC SINGLE SLIDING

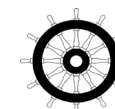
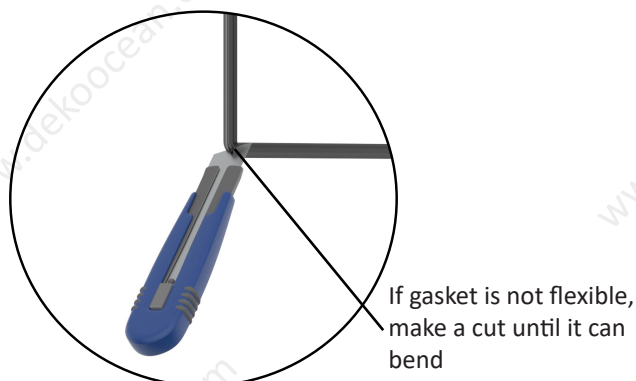
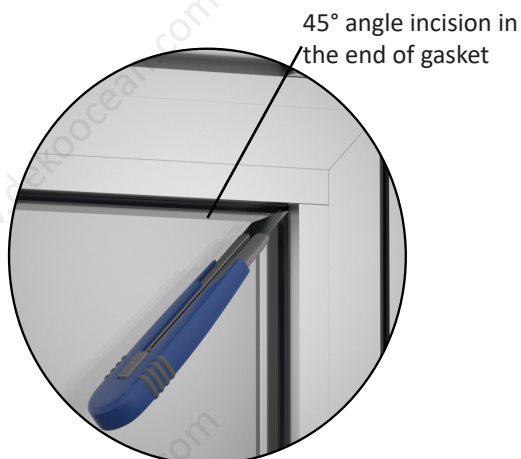
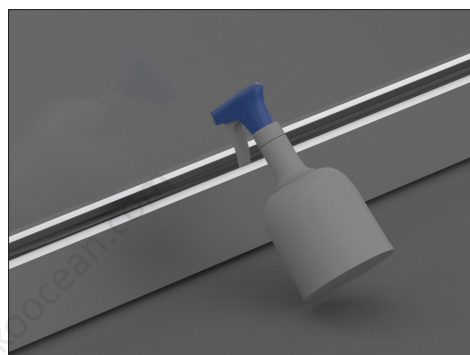
- To keep square (90°) corners in the door leaf, lift the glass away from the frame to make space for additional glazing bricks.
- Glue the bricks with silicone above the glazing clips in the two opposite corners of the door leaf:
One left and one right side – UPPER CORNER.
- If the door is still not square, wider glazing bricks have to be inserted on the sides where the glass is too close to the frame.
- Install the glazing bead around the glass, on both sides. Push it to the frame until it clicks.
- First snap-in in the top and bottom of the leaf, afterwards the two sides.

Glazing bricks placement for keeping glass
stable and square



DEKO OCEAN GD A60 AUTOMATIC SINGLE SLIDING

- Using soapy water insert the glazing gaskets from both sides. Use a gasket roller, if necessary to finish the job properly. Always use at least 5mm extra length when you are cutting the gasket, as in cold conditions the gasket will shrink. Do not pull the gasket when installing.
- Make two 45° angle incisions in the end of gasket for gaskets connection in the corners. Always do that at the top of the leaf.
- If the gasket is not enough flexible, at the corners, make a deeper incision until it can bend properly.
- Check the door for opening and closing. If the door closes to fast, adjust the door pump on top of the door with a hex key.
- If the door is jamming, adjust the railing so the door leaf can run beside of its frame aligned. Adjust steel labyrinths on the back of the door if needed.



DEKO OCEAN GD A60 AUTOMATIC SINGLE SLIDING

Door handle and rose installation

- Install the handle, roses and other accessories you have removed from the door leaf so that you can open the door, since adjustments have to be made.
- Install the rose for the door handle by fixing 2 screws with a screwdriver. Push the handle with the spindle inside the lock and fix it with a hex key while pressing the handles against each other.
- Cover the rose with a rose cover by sliding it through the handle and pushing it on the rose until it clicks.

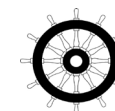
Rose installation by fixing 2 screws



Handle fixation



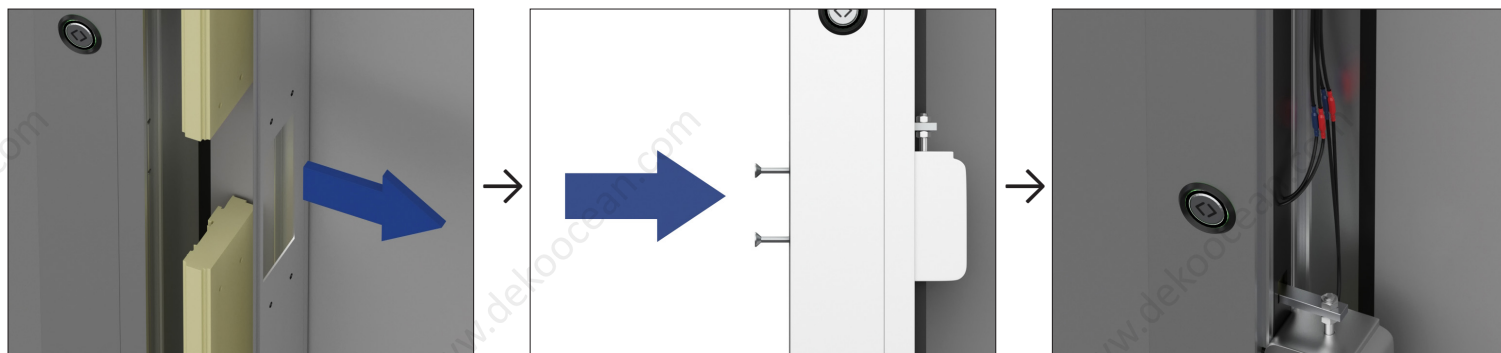
Cover rose with a Rose Cover until it Clicks



DEKO OCEAN GD A60 AUTOMATIC SINGLE SLIDING

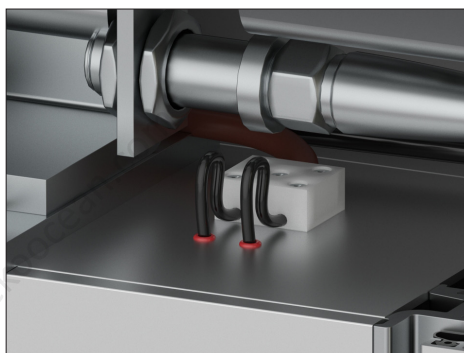
Electrical connections

- For doors equipped with magnetic lock lifter mechanism please remove the cover profiles from the frame and insulation if necessary.
- Mount the electro magnet with the 4 pieces M5 type screws at the requested height. The height can be adjusted later also to be at correct position for the door leaf latch.
- Connect the wires from the automatic to the push button and to the electro magnet. The wires can be pulled into the space between the steel brackets where the fire tapes are placed.
- If you are familiar with the drive system, try the magnet and the push button out to be sure it's working. If you are not familiar please contact the drive system producer or a local electrician.



DEKO OCEAN GD A60 AUTOMATIC SINGLE SLIDING

- Place back the frame fire insulation – fasten it with the same screws back to its original position and cover the magnet with the cover box if supplied.
- For door frames hidden behind the wall covering and insulation, the cover box is not necessary to be used. Cover box can be ordered separately.
- The safety bar switches have to be connected also: this connector can be found on the top of the door leaf and has to be connected with the fire rated wire from the automatic box, which is running through the cable chain on top of the door.
- After all is set try the automatic out by turning it on. Adjustments can be done just by software from automatic drive producer or by a qualified technician.



LIST OF REQUIRED TOOLS

Level



Tape measure



Knife



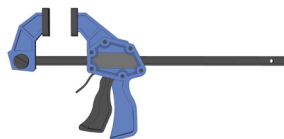
Screw driver



Rubber mallet



C-clamps



Strap cutter



Silicone caulking



Non-metal hand wedge



Heavy-duty glass lifter



SCREWS



Power drill with 6-6.5 drill



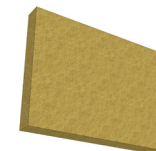
Piece of wood



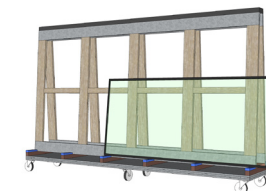
Soap water



Mineral wool



L-rack



Forklift



Please do not hesitate to contact us, if you have any further questions.

Best Regards

